

# ADDITIONS & MODIFICATIONS SPECIFICATION GUIDE



— An OHI Company —

2905 VETERANS MEMORIAL HIGHWAY - SUITE #2  
RONKONKOMA, N.Y. 11779  
800.645.5520  
LANGERBIOMECHANICS.COM

ohi



— An OHI Company —



# Additions & Modifications

## Specification Guide

Langer Biomechanics has been providing healthcare professionals lower extremity solutions for more than forty years. Our broad range of custom foot orthotic shells, top covers, additions and modifications allow you to address the biomechanical needs of patients suffering from lower extremity ailments. This guide was created for you to easily determine the ideal combination of orthotic components for your patient's unique needs. These additions and modifications are the most popular, we can accommodate a range of others upon your request.

### Gait Plate Extension - Modification



Not available on First Choice  
EXCEPT Pediatric

- Specifications:**  
Height and distance depend on the cast
- Condition(s):**  
To correct in toe/out toe gait
- Orthotics:** All rigid & semi-rigid orthotics  
EXCEPT Superform

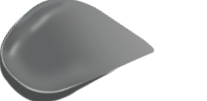
### Lateral Clip - Addition / Modification



Not Available for FIRSTCHOICE

- Specifications:**  
Height and distance depend on the cast
- Condition(s):**  
Ankle sprains and instability.
- Orthotics:** All except fashion devices

### Lateral Flange - Addition



Not available on First Choice  
EXCEPT Pediatric

- Specifications:**  
Height and distance depend on the cast
- Condition(s):**  
Ankle sprains and instability.
- Orthotics:** All except fashion devices

### Medial Flange - Addition



Not available on First Choice  
EXCEPT Pediatric

- Specifications:**  
Height and distance depend on the cast
- Condition(s):**  
Dropped navicular, pes planus, stabilize the foot
- Orthotics:** Can be added to all orthotics

### Heel Punch (with fill) - Modification



Not Available for FIRSTCHOICE

- Specifications:**  
1 1/4" standard and 1" for slim devices  
Slow recovery PPT® or PPT®
- Condition(s):**  
Heel pain
- Orthotics:** All except Slimthotic

### Deep Heel Seat - Modification



- Specifications:**  
≥ 1/2"
- Condition(s):**  
For heel pain, add medial and lateral flanges to help control the rear foot
- Orthotics:** Can be added to all orthotics

### Morton's Extension to Shell - Modification



Not Available for FIRSTCHOICE

- Specifications:**  
Based on the cast
- Condition(s):**  
Severe hallux rigidus
- Orthotics:** All except Slimthotic

### 1st ray cutout - Modification



- Specifications:**  
Based on the cast
- Condition(s):**  
Hallux Limitus
- Orthotics:** Can be added to all orthotics

### Kinetic Wedge - Addition



Not Available for FIRSTCHOICE

- Specifications:**  
Based on the cast  
Medial, lateral or custom
- Condition(s):**  
Functional hallux limitus
- Orthotics:** Can be added to all orthotics

### PPT® Forefoot Extension to Toes - Addition



- Specifications:**  
1/16", 1/8" PPT®
- Condition(s):**  
Extra cushioning for comfort and shock absorption
- Orthotics:** Can be added to all orthotics

### Plastazote® Forefoot Extension to Toes - Addition



- Specifications:**  
1/16", 1/8" Plastazote®
- Condition(s):**  
Calluses and/or Diabetes
- Orthotics:** Can be added to all orthotics

### PPT®/Plastazote® Forefoot Extension to Toes - Addition



- Specifications:**  
3/16" total (1/16" PPT® + 1/8" Plastazote®)
- Condition(s):**  
Calluses and/or Lesions, IPK
- Orthotics:** Can be added to all orthotics

### Heel Spur Pad - Addition



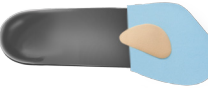
- Specifications:**  
1/8" PPT®
- Condition(s):**  
Heel pain caused by spur
- Orthotics:** Can be added to all orthotics

### Heel Cushion - Addition



- Specifications:**  
1/8" & 1/16" PPT®
- Condition(s):**  
Heel pain
- Orthotics:** Can be added to all orthotics

### 2-4 Met Pad - Addition



- Specifications:**  
1/8", 3/16" thickness  
1/8" distal to shell
- Condition(s):**  
Metatarsalgia
- Orthotics:** Can be added to all orthotics

### Met Bar - Addition



- Specifications:**  
1/8" PPT®  
1/4" distal
- Condition(s):**  
1st - 5th metatarsal pain
- Orthotics:** Can be added to all orthotics

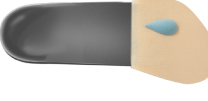
### Toe Crest Pad - Addition



\* Not Available for FIRSTCHOICE

- Specifications:**  
1/8" - 3/16" PPT®  
2nd - 5th based on cast
- Condition(s):**  
Hammer toes / claw toes
- Orthotics:** Can be added to all orthotics

### Neuroma Pad - Addition



- Specifications:**  
1/8" - 3/16" PPT®  
1st - 4th interspace
- Condition(s):**  
Neuromas in the interspaces
- Orthotics:** Can be added to all orthotics

### Neuroma Plug - Addition



- Specifications:**  
1/8" - 3/16" PPT®  
1st - 4th interspace
- Condition(s):**  
Neuromas in the interspaces
- Orthotics:** Can be added to all orthotics

### Dancer's Pad - Addition

(may be called a Reverse Morton's at other labs)



Not Available for FIRSTCHOICE

- Specifications:**  
1/8" PPT®
- Condition(s):**  
1st metatarsal pain/bunion
- Orthotics:** Can be added to all orthotics

### Scaphoid Pad - Addition



- Specifications:**  
1/8" - 1/4" PPT®
- Condition(s):**  
Medial longitudinal arch pain / support to raise the arch softly
- Orthotics:** Can be added to all orthotics

### Morton's Extension - Addition

(may be called a soft Morton's at other labs)



Not Available for FIRSTCHOICE

- Specifications:**  
1/8" crepe
- Condition(s):**  
Hallux rigidus
- Orthotics:** Can be added to all orthotics

### Balance Pad - Addition



Not Available for FIRSTCHOICE

- Specifications:**  
1/4" korex  
1/16" - 1/4" PPT®
- Condition(s):**  
Balance out calluses or metatarsal prominences
- Orthotics:** Can be added to all orthotics

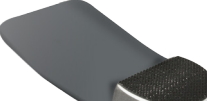
### Toe Buttress\* - Addition



Not Available for FIRSTCHOICE

- Specifications:**  
Plastazote®
- Condition(s):**  
Fill to accommodate amputated toes or full transverse metatarsal amputation
- Orthotics:** Can be added to all orthotics

### Heel Lift - Addition



- Specifications:**  
Crepe, not recommended greater than 1/2"  
we suggest blending to metatarsals with added PPT® arch fill for feathering
- Condition(s):**  
Leg length discrepancy
- Orthotics:** Can not be added to any device that is standard intrinsically posted (lifts sent separately)